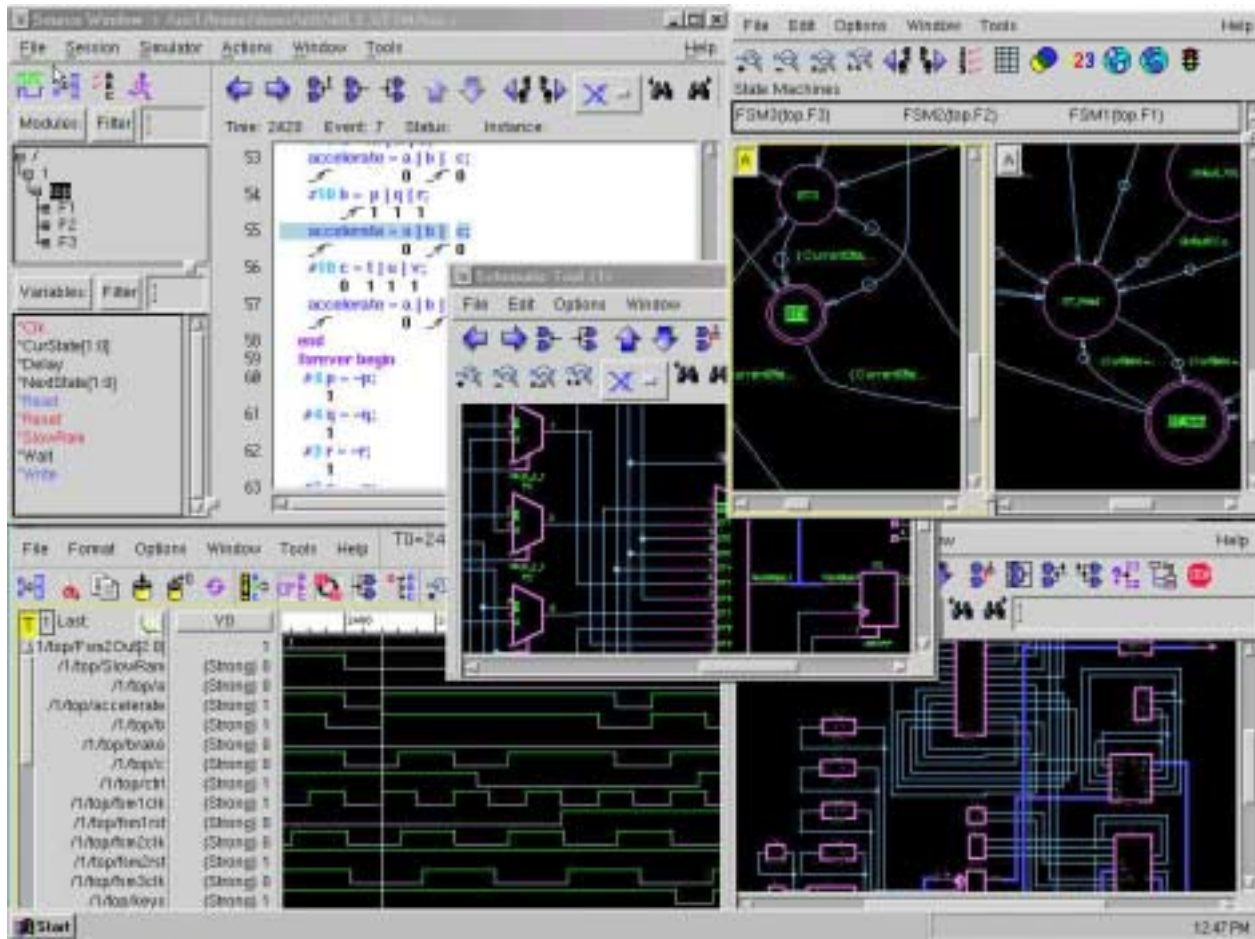


Undertow Suite with Denali Memory

Veritools' design solutions now includes a complete integration with a synchronized view of the memory data for the Denali memory models.



Undertow Suite with Denali Memory integration includes these important features:

- **A true integration of the Denali memory model data base into the Undertow Suite debugging environment**
- **Works with any of the Denali memory models**
- **Allows users to see both their waveform data and their memory data, synchronized at any point in their design**
- **Extremely easy to set up and use; just requires reading another file containing the memory data**
- **Included in Undertow Suite at absolutely no extra cost**

Undertow Suite now includes a complete integration with a synchronized view of the memory data for the Denali memory models. Users can view their design with Undertow Suite, and go to any time point to see exactly what the contents is of any memory location anywhere in their modeled memory space and at the same time view their waveform data at the exact same time point. Both the waveform data and the memory content data are synchronized completely. The synchronization of the waveform data and the memory data is maintained while the user moves the primary time cursor to any point in their simulation data base. This integration is a true integration of the Denali memory data base with a waveform view of the same design, and is not a time synchronization of two completely different debugging environments.

Trademarks are owned by their respective corporations.



Download Undertow Suite from our web site: www.veritools.com